

ECPA

eSubmission Viewer Guide



Version: 1.3 – September 2019



1. Contents

1. Contents	2
2. Introduction.....	2
3. Viewing CADDY-xml submissions	2
4. Download and installation instructions.....	3
Preface.....	3
Installation steps	3
5. Testing the internet connectivity	7
6. CADDY-xml - Quick start guide	8
Viewer manual instructions.....	10
7. Shortcuts	10
8. Functional overview	10
Menu File.....	11
Menu View	11
Menu Tabs.....	11
Menu Help.....	11
9. Viewer settings	12
Application Settings.....	12
Viewer versions	13
Viewer module versions.....	13
Help	14
Change of defaults in customized installations.....	14
10. IT expert information	14
Advanced internet access configuration.....	14
Manual download of a viewer module	14
Commandline to open a submission.....	15
11. Contact information	15

2. Introduction

The ECPA eSubmission Viewer is a Windows application that is used to view and work with electronic dossiers in the formats CADDY-xml or GHSTS. Those formats are mainly used for crop protection submissions.

The present document focuses on the CADDY-xml format, the description is almost equivalent for the GHSTS format.

This document contains installation instructions and a quick start guide, to make you familiar with its basic functions. For more information about

- the ECPA eSubmission Viewer see <https://esubmission.ecpa.eu/esub-viewer>
- CADDY-xml see <https://esubmission.ecpa.eu/caddy>, for more information about GHSTS see <https://esubmission.ecpa.eu/ghsts>
- eSubmission in the crop protection domain please visit the ECPA eSubmission website at <https://esubmission.ecpa.eu/>

3. Viewing CADDY-xml submissions

The eSubmission Viewer can open CADDY-xml dossiers with an additional CADDY-xml viewer module that will be automatically installed when needed for the first time.

Up to specification version 03.07.00 (released in 2014) every CADDY-xml submission contained an “embedded viewer” as part of its submission folder structure. The embedded viewer was launched by opening the file “index.html” in the default web browser of the user. This viewer is limited in functionality, causes issues in current web browser versions and its functionality is bound to version that was available at the time of the creation of the submission.

Starting with specification version 03.08.00 (released in 2019) there is no more embedded viewer in the submission folder structure and the eSubmission Viewer with the CADDY-xml viewer module is used to display those dossiers. Both are installed once on the local PC and are then used to open all CADDY-xml dossiers. There is no need for an individual download / installation for every submission to open.

The CADDY-xml viewer module of the eSubmission Viewer is backwards compatible and can also display older versions of CADDY-xml dossiers. The user can decide for those dossiers whether to use the embedded viewer or the viewer module.

In case there is no installed eSubmission Viewer available, each submission with version 03.08.00 or later will contain a file named “caddy.html” that opens in every web browser and displays the content of the submission in a simplified static version.

4. Download and installation instructions

Preface

This section describes the default installation steps on a standard Windows 10 PC for a user which possesses Windows access rights to download and install programs. Within companies the described default installation sequence is likely to vary, because

- the company / authority distributes software only via internal software distribution mechanisms – this will then also affect the uninstallation procedure
- the company / authority limits user access rights
- the company / authority uses a proxy server with access limitations for internet access that prevents the eSubmission Viewer to download and install the CADDY-xml viewer module

In those cases, you may need to consult your local IT department and deviate from the steps described below. The description of the possible installation scenarios is out of scope of this document.

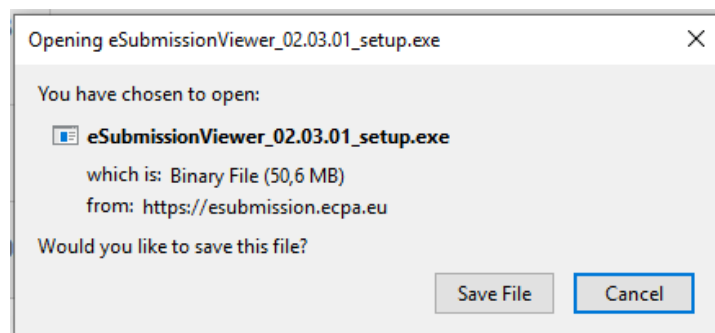
Please note that all screenshots will vary in later versions or different environments. The file name, versioning and date information in the screenshots are for explanation only and are not updated in this document for every new viewer release.

Installation steps

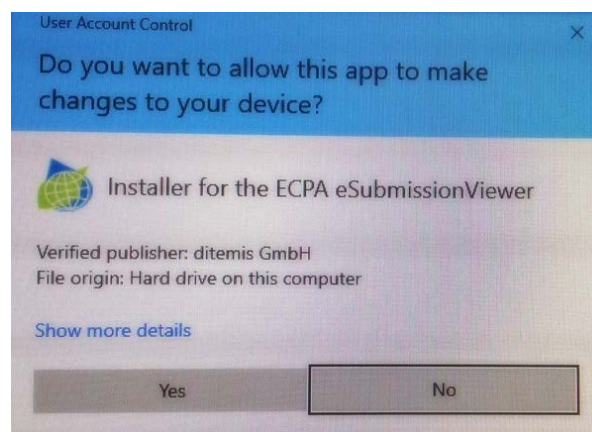
1. Open your default web browser and open the web page <https://esubmission.ecpa.eu/esub-viewer> . Please read the web page for latest information that may not be part of this documentation.
2. In the “Downloads” section on this page, locate the link “[Download page for current eSubmission Viewer version](#)” and click on it.
3. You will see a page with a table like the following (as of September 2019 – details may change over time):

No	Title	Version	Description	Release Date	Size	Release Notes	Download
1	eSubmission Viewer 02.03.01	02.03.01	eSubmission Viewer capable of displaying dossiers in GHSTS and CADDY.xml format Version 02.03.01: setup supplied with code-signing certificate (Publisher: ditemis), minor bugfixes	2019-09-03	52 MB		Link
2	eSubmission Viewer Guide 1.3	1.3	eSubmission Viewer Guide, focussing on installation and working with CADDY.xml dossiers Version 1.3: Update with signed setup files (Publisher: ditemis GmbH)	2019-09-03	670 kB		Link
3	GHSTS 02.00.00 viewer walkthrough	02.00.00	Document with graphical viewer walkthrough to demonstrate main viewer functions in GHSTS viewer 02.00.00	2016-06-08	2,3 MB		Link

4. Select the line with the latest eSubmission Viewer version and click on the “Link” in the rightmost column “Download”. Please also look at the Release notes, if provided.
5. Your web browser will show you a dialog like this (the details of the dialog change between different browsers). Please save the eSubmission Viewer setup executable file to your preferred download location.



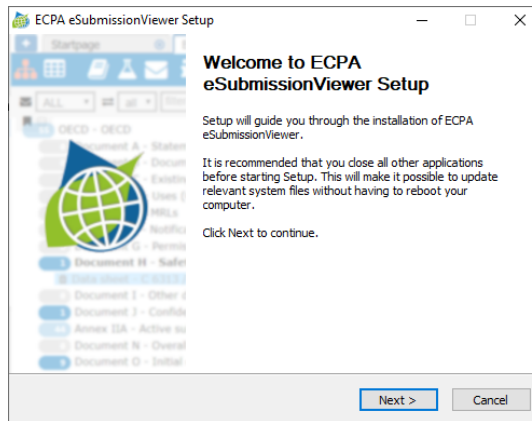
6. Save the folder to a local folder on your PC and remember the folder location. Open your Windows explorer and open the folder where you have just saved the setup file. DoubleClick on the setup file to start the installation procedure.
7. Windows will prompt you with the following user account control mask:



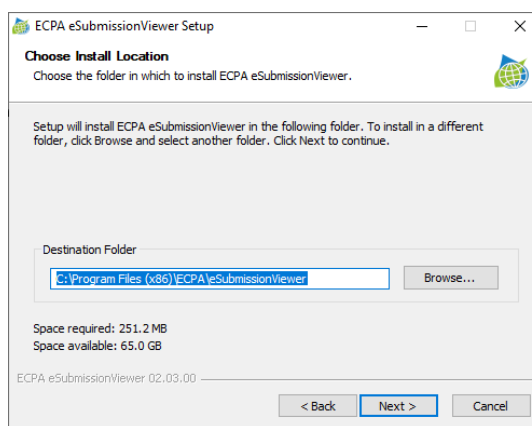
Please confirm the verified published “ditemis GmbH” and click “Yes” to continue.

8. The installation wizard will start with the following screen. Please click “Next” to continue.

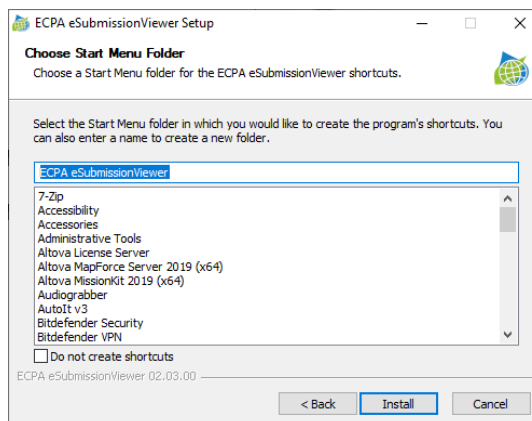
ECPA eSubmission Viewer Guide



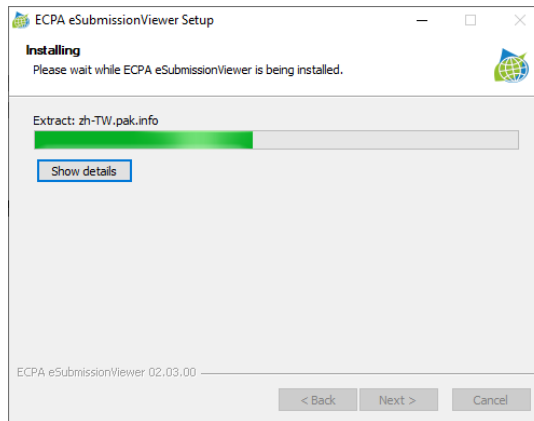
9. In the install location screen, keep the suggested destination folder and click “Next”.



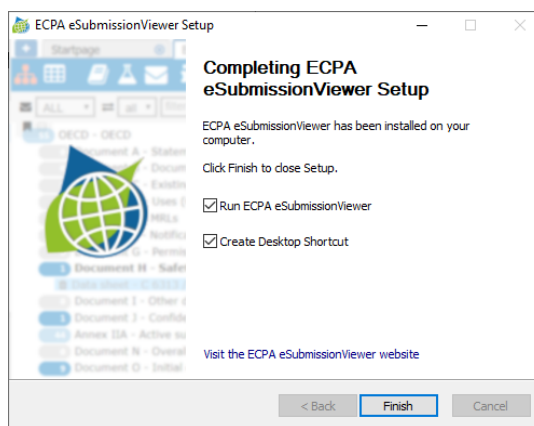
10. In the start menu folder dialog, keep the default suggestion and click on “Install” to start the installation procedure.



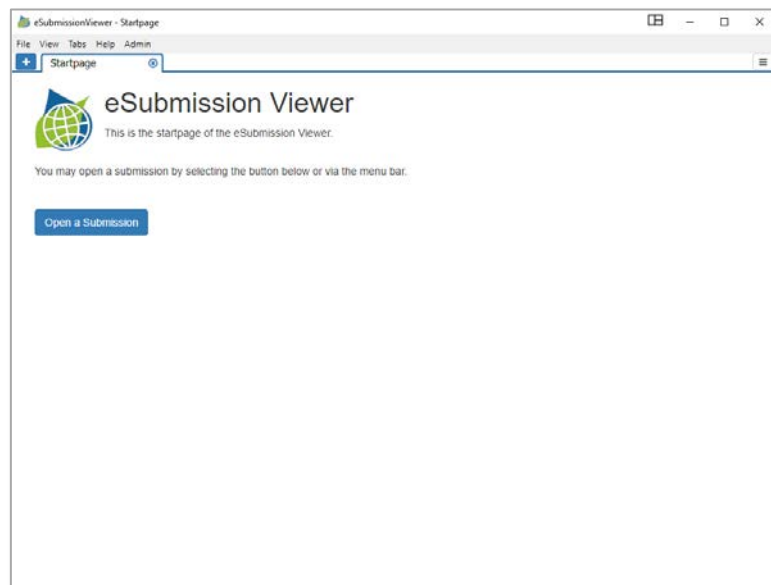
11. During the installation you will see the progress of installation in the progress bar. The installation will approximately take 1-2 minutes.



12. After installation the completion dialog appears. It is recommended to keep the default setting and to click "Finish".



13. The ECPA eSubmission Viewer will be launched for the first time. Please do not yet open a submission right now, but test the internet connectivity first by walking through the steps in the next chapter. You can keep the viewer open.

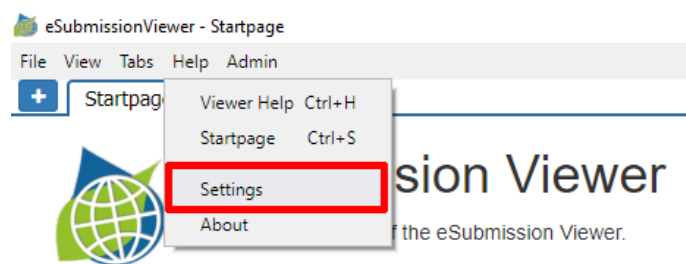


5. Testing the internet connectivity

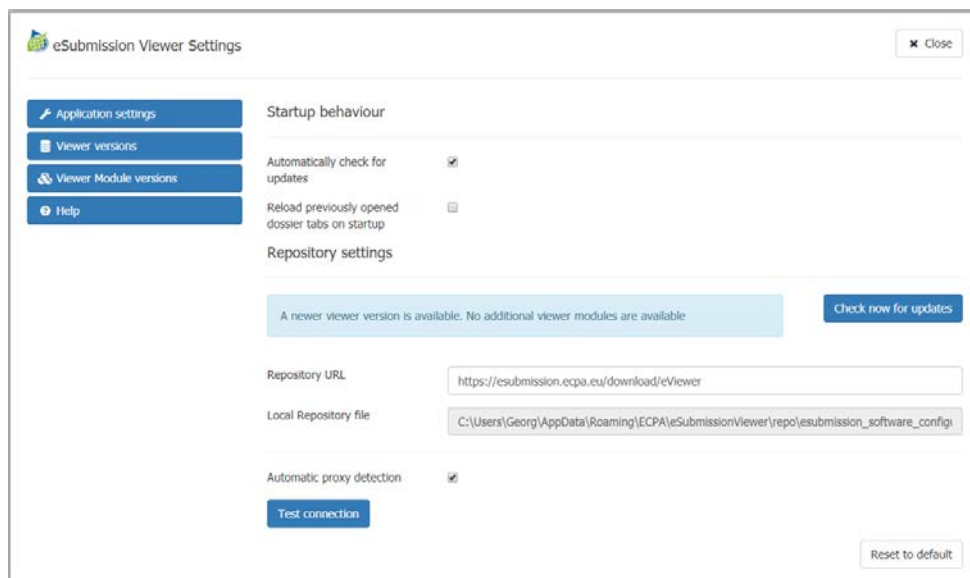
In the previous chapter you have installed the eSubmission Viewer. This viewer requires so-called viewer modules for CADDY or GHSTS to display the submissions. The viewer modules are not part of the previous installation steps. eSubmission Viewer. The viewer modules are downloaded and updated from an eSubmission software repository hosted by ECPA on the internet when they are needed. A working internet connection for the eSubmission Viewer is therefore required for this download.

Therefore, before describing the functionality of the eSubmission Viewer, this section describes how to verify whether the eSubmission Viewer has a working internet connection.

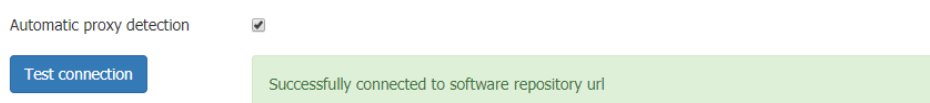
1. Open the ECPA eSubmission Viewer and click on the Menu “Help” and then “Settings”.



2. The following dialog window will appear:



3. Click on the “Test connection” button at the lower end of the pane. When the connection test is successful you will see the following message displayed to the right of the button and no further action is required.



In case of errors you will see a message in red like below. In this case please contact your local IT department for further assistance.

Test connection

Could not connect to software repository url: getaddrinfo ENOTFOUND esubmission.ecpa.eu esubmission.ecpa.eu:80

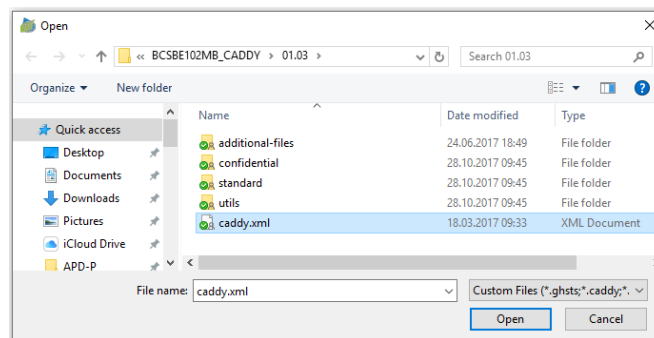
Please take a screenshot of the error message and provide it to your local IT department. Please refer your IT department to the chapter “IT expert information” below in this document.

When you have successfully tested the internet connection for the eSubmission Viewer, you can close the settings dialog and proceed to the next chapter.

6. CADDY-xml - Quick start guide

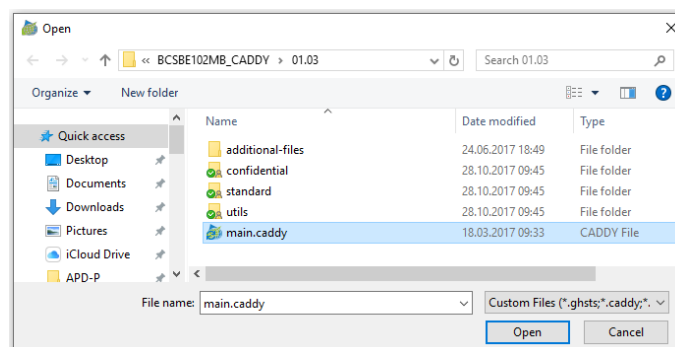
This chapter contains a quick start guide that can be used after having installed the eSubmission Viewer and the internet connectivity has been successfully tested.

- Open the eSubmission Viewer
- Click the Menu File / Open local submission. Navigate to the folder with the desired CADDY-xml submission to open, select the file caddy.xml and click “Open”

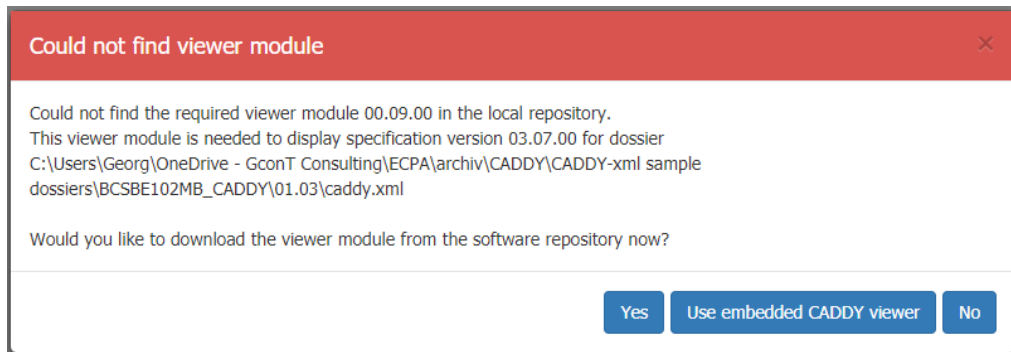


Note 1: Dependent on your local Windows settings the file may be displayed as “caddy” only, with the extension “.xml” not displayed. The file type will be “XML Document”

Note 2: From version 03.08.00 the file caddy.xml will be renamed to “main.caddy”. Please open this file. Alternatively, you can double-click “main.caddy” in the Windows Explorer to start the eSubmission Viewer automatically with this submission, as the extension “.caddy” is being registered as “CADDY File” with the eSubmission Viewer as default application to open it. As for Note 1, the file may only be listed as “main” dependent on local settings.

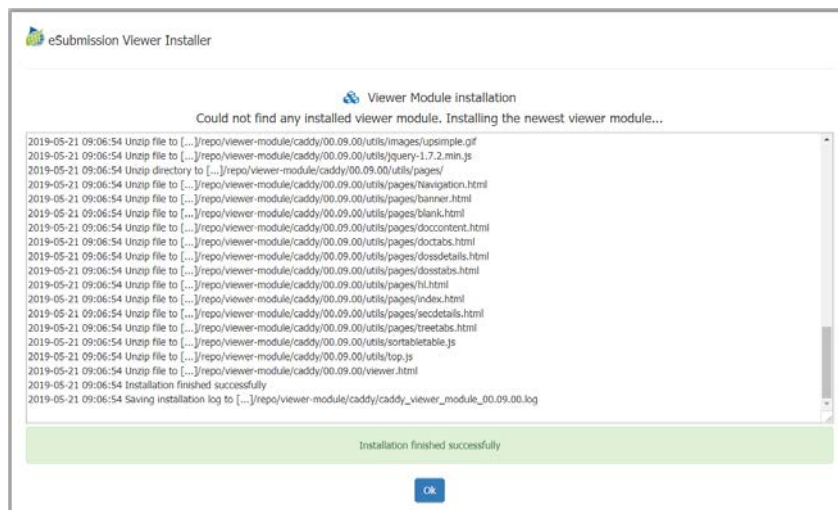


- If this is the first time you open a CADDY-xml dossier the eSubmission Viewer will display a message similar to the one below.

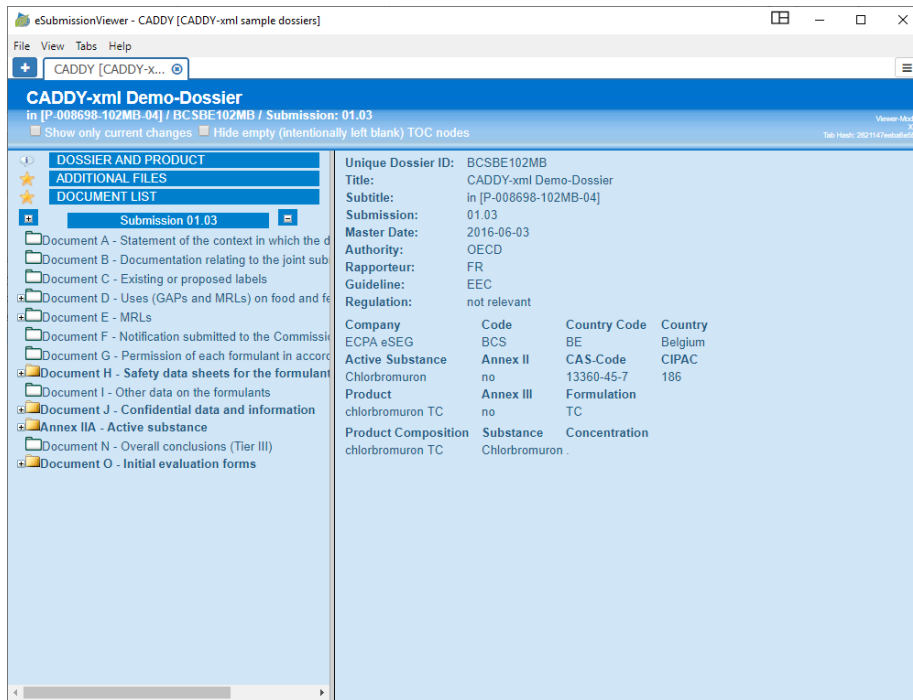


Please click **“Yes”** to download the required viewer module. This step will only be required once and won't be subsequently required for any future CADDY-xml submission of a specification version that can be displayed with this viewer module. It will then be subsequently used for all applicable CADDY-xml submissions. As in the example this is a dossier with version before 03.08.00 you may also use the embedded viewer, which however does not convey any advantages and you will be asked for every submission again.

The progress of the viewer download and installation is displayed and the successful status reported as **“Installation finished successfully”**. Click **“OK”** to continue.



- The CADDY-xml dossier will open in a new tab of the eSubmission Viewer. You can then start working as known from the embedded viewer.



- You can open multiple dossiers which are then displayed in different tabs. You can operate with the tabs in a similar manner as in any common web browser.

Viewer manual instructions

This manual does not contain information about the viewer-modules.

For CADDY-xml the functionality and design of the embedded viewer has remained largely unchanged since 2012 and has been ported to the respective CADDY-xml viewer module. Therefore, the display in a tab of the eSubmission Viewer looks very similar to the previous embedded viewer displayed in a web browser.

7. Shortcuts

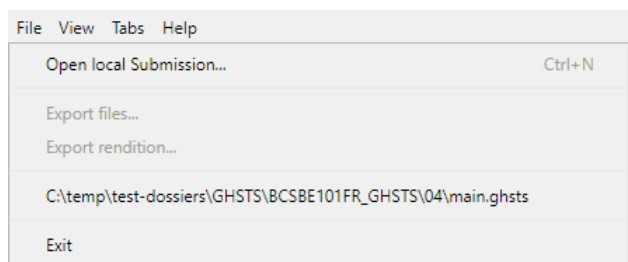
The eSubmission Viewer supports the following keyboard shortcuts:

Action	Shortcut
Open submission	Ctrl + N
Close Tab	Ctrl + W
Restore last closed tab	Ctrl + Shift + W
Open Startpage	Ctrl + S
Open Help	Ctrl + H
Zoom in	Ctrl + .
Zoom out	Ctrl + -
Zoom default (100%)	Ctrl + 0

8. Functional overview

This chapter provides an overview of the main functions of the eSubmission Viewer.

Menu File

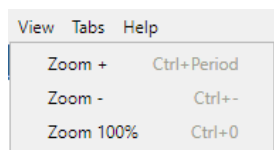


The menu entries in the “File” menu allow you to

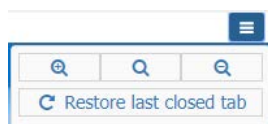
- Open a submission, accessible within the Windows Explorer from your local PC (e.g. local hard drive or mounted network drive)
- Export files (currently not available for CADDY-xml submissions)
- Export rendition (currently not available for CADDY-xml submissions)
- See the list of “Most recently used” submissions and to select one of them to be opened in the eSubmission Viewer
- Exit the eSubmission Viewer

Menu View


The menu entries in the “View” menu allow you to zoom in / zoom out to change the display size within the content area.

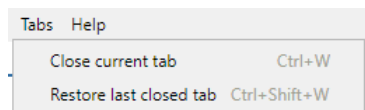


A similar functionality is available from the breadcrumb menu in the upper right corner:



Menu Tabs

The eSubmission Viewer supports the parallel loading and display of multiple submissions in different tabs. This menu allows you to close the current tab (also possible by clicking the  icon at the right side of the tab) and to restore the last closed tab.

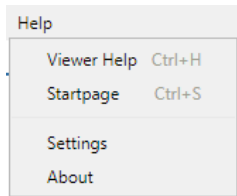


Menu Help

The menu entries in the “File” menu allow you to

- Open a sample help file. Your company / authority may decide to provide a custom help file by updating the file “help\help.html” in the installation folder.

- Open the default start page of the eSubmission Viewer. Your company / authority may decide to provide a custom start page by updating the file “startpage\startpage.html” in the installation folder.
- Open the Settings pane of the eSubmission Viewer (see separate chapter)
- Open the About dialog to see the current version, credits and further information.

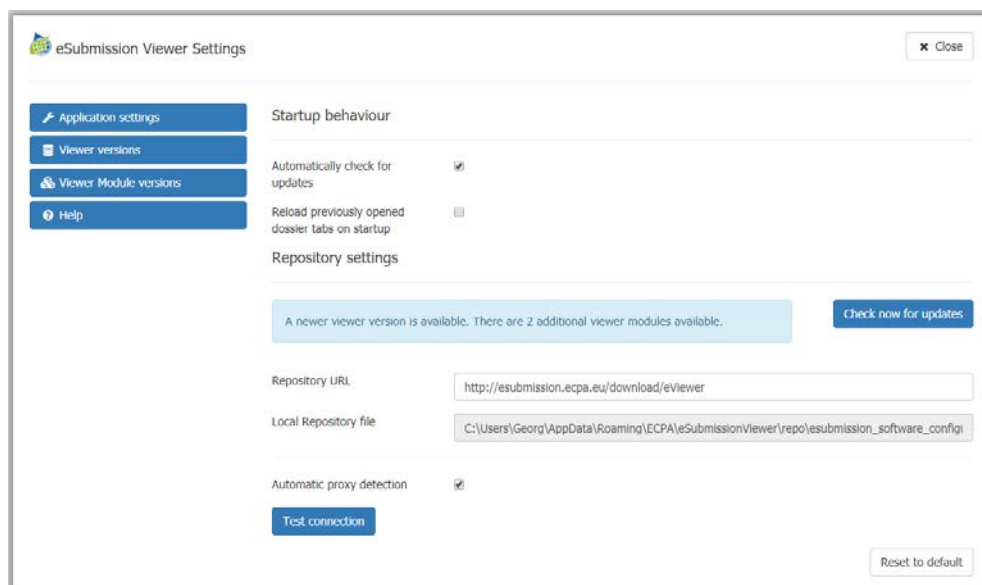


9. Viewer settings

The viewer settings allow to further customize the eSubmission Viewer for the needs of a company / authority or the individual user.

Application Settings

- You can change the startup behaviour. It is recommended to keep the default settings. You will then be automatically informed about updates of the viewer itself or any viewer module.
- Do not apply changes to the Repository settings. Changes may occur only, if a company / authority decides to host their own eSubmission Viewer repository.
- The lower part allows to test the connection to the software repository and to change proxy configuration is required (see chapter above).



Here is an example for the information of a new viewer version, when “Automatically check for updates” is selected:

New viewer version available

A new viewer version is available for download:
Version: 02.02.00
Description: eSubmission viewer
Release Log: Adds support for CADDY-XML viewer modules

Would you like to download the new viewer now?

[Download](#) [Don't ask again](#) [Not now](#)

Viewer versions

This pane displays available viewer versions. You can manually download the setup file for the viewer version from this pane. If you download and install yourself, please make sure that you properly uninstall the currently installed version. Only one viewer version can be installed at a time.

Please note that this functionality should not be used, if your company / authority is provisioning the eSubmission Viewer software differently. In this case you may want to inform your local IT to add the new version to the internal software distribution.

The screenshot shows the 'eSubmission Viewer Settings' dialog with the 'eSubmission Viewer versions' pane selected. On the left, a list of versions is shown with '02.02.00' selected. On the right, a table provides details for the selected version.

Version	02.02.00
Description	eSubmission viewer
Release Log	Adds support for CADDY-XML viewer modules
Download	viewer/eSubmission_Viewer_02.02.00.zip.bin
MD5 Zip	30642991b5f7a6dfcb3a546b5716b83d
MD5 Zip Binary	da19a7d9d691f972f06f42d1692e4538
Installed	✘

Viewer module versions

This pane shows available viewer modules for all versions and their installation status. If they are not yet installed, you can install them manually from here. This is usually not required, as the eSubmission Viewer will download and install the required viewer module automatically when the first dossier of a format is opened.

The screenshot shows the 'eSubmission Viewer Settings' dialog with the 'eSubmission Viewer Module versions' pane selected. On the left, a list of modules is shown with 'ghsts 02.01.00' selected. On the right, a table provides details for the selected module.

Version	02.01.00
Submission format	ghsts
Supported versions	01.01.00, 01.00.00
Description	GHSTS html viewer module
Release Log	First downloadable release for software repository
Download	viewer-module/ghsts/ghsts_viewer_module_02.01.00.zip.bin
MD5 Zip	06495789c2d6d28e908da0e333b3c43e
MD5 Zip Binary	8e6e4b12df628d6c32a93a056f08ff7d
Installed	✘

Help

This pane displays the same information as via the Menu “Help / Viewer Help”

Change of defaults in customized installations

The locally configurable settings are stored in the file “eSubmissionViewer\config\app.data” in JSON format below the installation directory. If a company / authority wants to change the default settings as part of a customized installation, the respective values can be changed in this file with care. Thorough testing of this modification is required.

10. IT expert information

The following information is intended for IT specialists and can be skipped by end users.

Advanced internet access configuration

Connection errors are most likely due to specific proxy settings or proxy authentication issues. The eSubmission Viewer supports an advanced proxy configuration. To activate those configuration options, open the viewer settings via Help / Settings and deselect the checkbox “Automatic proxy configuration”. A field to enter the URL for a Proxy PAC script is available.

If a PAC script is not available, please click on the dropdown arrow next to “advanced proxy configuration” to display further options for expert configuration.

Automatic proxy detection

Proxy PAC

Advanced proxy configuration

Please see the chapter below for a backup option of a manual download of a viewer module.

Manual download of a viewer module

If for some reason the internet connectivity of the eSubmission Viewer cannot be established, the required viewer-modules may also be downloaded separately using the default web browser

The information in XML form about the eSubmission Viewer versions and the viewer modules are located in the file

http://esubmission.ecpa.eu/download/eViewer/esubmission_software_configuration.xml

To install the latest CADDY-xml viewer modules please locate the appropriate section in the XML file (latest version with submission_format="CADDY"):

```
<ViewerModule version="00.09.00" submission_format="CADDY" deprecated="false">
  <SpecificationVersions>
    <SpecificationVersion>03.00.00</SpecificationVersion>
    <SpecificationVersion>03.00.05</SpecificationVersion>
    <SpecificationVersion>03.06.00</SpecificationVersion>
    <SpecificationVersion>03.06.01</SpecificationVersion>
    <SpecificationVersion>03.07.00</SpecificationVersion>
  </SpecificationVersions>
  <Description>CADDY-XML viewer module</Description>
  <ReleaseLog>Test version 00.09.00 to test integrated CADDY module</ReleaseLog>
  <Download>viewer-module/caddy/caddy_viewer_module_00.09.00.zip.bin</Download>
  <MD5 type="bin">d6d0d3ba0e6c67f3cb811f59ec467536</MD5>
  <MD5 type="zip">89e6e796815447d6eadcea9e21668dba</MD5>
  <CipherKey>esub-viewer-caddy</CipherKey>
</ViewerModule>
```

Append the value of the element Download to the root URL

<http://esubmission.ecpa.eu/download/eViewer/> (e.g. in the above example http://esubmission.ecpa.eu/download/eViewer/viewer-module/caddy/caddy_viewer_module_00.09.00.zip.bin) to download the viewer module separately.

The file can then be copied into the following local folder of the user "%appdata%\ECPA\esubmissionviewer\repo\viewer-module". The viewer module will be unpacked and installed automatically the next time, the eSubmission Viewer starts.

Commandline to open a submission

The eSubmissionViewer can be called from the Windows commandline and is able to load submissions with the command line argument "--submission".

Here is an example for a command line execution:

```
eSubmissionViewer.exe --submission="C:\ghsts\dossier\01\main.caddy"
```

11. Contact information

For further technical information about the eSubmission Viewer please contact the helpdesk via the CADDY technical support contact (see details on <http://esubmission.ecpa.eu/contact>). Individual technical customizations and enhancements (e.g. dossier annotations, connectivity to document management systems) can be discussed, if financed by the requesting party.

Please note that this contact can only assist with general information about the ECPA eSubmission Viewer and cannot help with issues due to local characteristics of the IT environment.

--- end of document ---